



---

---

---

---

---

---

---

---



---

---

---

---

---

---

---

---



---

---

---

---

---


---

---

---

### Healthcare Coalition Description

Health care coalitions (HCCs) incentivize diverse and often competitive health care organizations with differing priorities and objectives to work together by collaborating to ensure that each member has the necessary medical equipment and supplies, real-time information, communication systems, and trained health care personnel to respond to an emergency. These regional efforts help each patient receive the right care at the right place at the right time.



4

---

---

---

---

---

---

---

---

### Learning Objectives

- At the completion of this webinar, participants will be able to:
  - Describe the different functions of an operational Healthcare Coalition and the members needed to execute those functions
  - Outline the key components to successful strategic development for an operational Healthcare Coalition
  - Describe different Healthcare Coalition organizational models



5

---

---

---

---

---

---

---

---



TRACIE  
HEALTHCARE EMERGENCY PREPAREDNESS  
INFORMATION GATEWAY

Speaker Introductions and  
Coalition Descriptions



6

---

---

---

---


---

---

---

---





Kevin McCulley  **Utah Department of Health**

- SL Area 1990s - chemical stockpile (CSEPP) and 2002 Winter Games
- Pilot in 2008, 4-2009, and 7-2010
- LHD-hosted (6/7) – funding for staff (.5-1 FTE) & equipment, training, exercise (varies)
- LHD Emer. Response Coordinator/ ESF8/Leadership Committee
- Hospitals, LTC, LHD, EMS , CHC and EM active, building on others
- Urban HCC up to 100 members, rural HCC 15-25 members

**Mission Northern** - To serve our communities through collaboration, coordinated communication, and resource sharing for effective medical surge management before, during and after a disaster response.

**Vision SST** – To provide common ground to integrate and strengthen essential relationships that provide the greatest good for our communities in time of need.

10

---

---

---

---

---

---

---

---

---

---



**TRACIE**  
HEALTHCARE EMERGENCY PREPAREDNESS  
INFORMATION GATEWAY

Functions and Outcomes of Operational Healthcare Coalitions



11

---

---

---

---

---

---

---

---


---

---

**Functions and Outcomes**

<b>Functions</b>	<b>Outcomes</b>
<ul style="list-style-type: none"> <li>• Planning</li> <li>• Resource Management</li> <li>• Information Sharing</li> <li>• Coordination</li> <li>• Training and Exercises</li> <li>• Fiscal and Administrative Management</li> </ul>	<ul style="list-style-type: none"> <li>• Preparedness</li> <li>• Response</li> <li>• Recovery</li> </ul>

[ASPR TRACIE Healthcare Coalition Models and Functions Topic Collection](#)



12

---

---

---

---

---

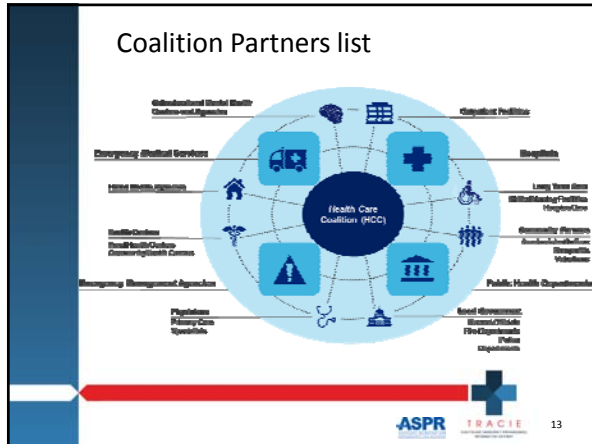
---

---

---

---

---




---

---

---

---

---

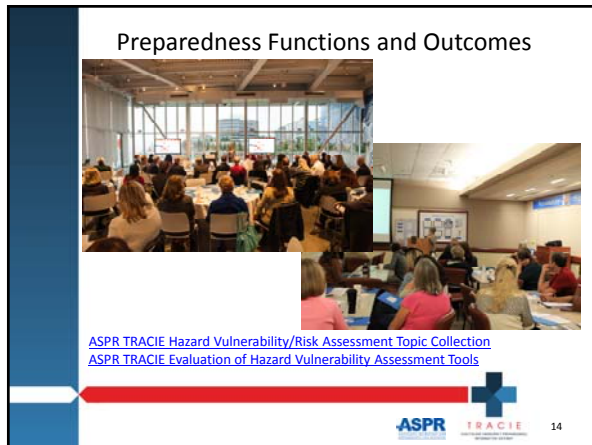
---

---

---

---

---




---

---

---

---

---

---

---

---

---

---

### Northern Virginia Hospital Alliance Preparedness

- RHCC Function: Ops Center, 24-hour Comms, Primary and Secondary facilities
- Regional logistics and Warehouse
- Surge Supplies
- Decon and Rad Detection
- EVD Preparedness
- Power and Water Resiliency
- Facility Evacuation
- Training
- Weather Ready
- Planning: RHVA, Regional Hospital Evacuation Support Annex, Regional Decon Response Protocols, MCI Planning

ASPR TRACIE 15

---

---

---

---

---

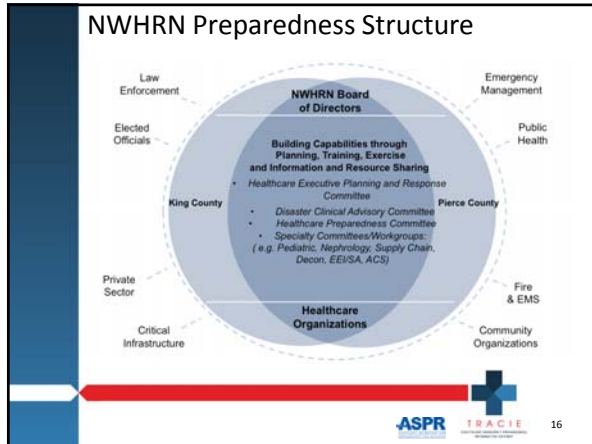
---

---

---

---

---




---

---

---

---

---

---

---

---

---

---

### Utah Department of Health

	Urban/Suburban	Rural/Frontier
Structure	LHD Hosted	LHD Hosted
Funding	HI <sup>1</sup> – Staffing, Training, Equipment, Exercises	HI <sup>1</sup> – Staffing, Training, Equipment, Exercises
Funding (Staff)	Full FTE + Admin Asst.	1/2-2/3 FTE
Population	1,121,207/9,555 = 118 per SM	56,080/1,432 = 3 per SM
Meetings	Full coalition bi-monthly, Executive Committee bi-monthly	Full Coalition quarterly, monthly coordinator attends LE/C, EMS, hospital EM meetings
Key Documents	By-Laws & Signed MOU Base Response Plan Resource Management Plan Commo Plan	Charter Base Response Plan Commo Tree or protocol
Priority Threats	Pandemic/Novel Event Earthquake Hospital Evacuation Large MCI – Plane Utilities Interruption	MCI-Bus Crash Receiving Earthquake Evacuees Pandemic/Novel Event Haz/Mat – Gas/Oil Event Severe Weather/ Fire

ASPR TRACIE 17

---

---

---

---

---

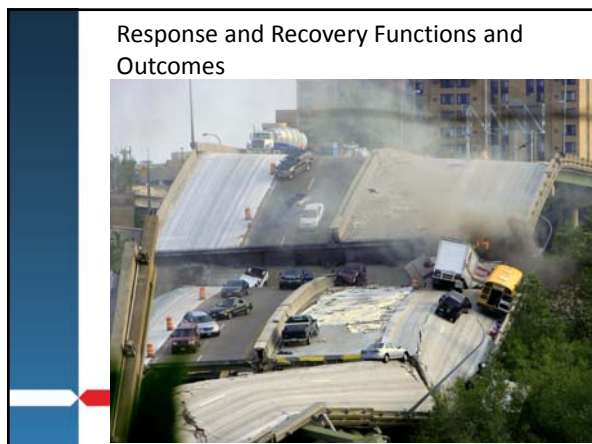
---

---

---

---

---




---

---

---

---

---

---


---

---

---


---

### Northern Virginia Hospital Alliance Response




- RHCC Function: Ops Center, 24-hour Comms, Primary and Secondary facilities
- Redundant Voice Communications: MedComm I and II, Satellite Phones, Amateur Radio, UHF
- Regional telemedicine system for centralized management and support for trauma and pediatric critical care during crisis
- VHASS: statewide web-based system for alerting, situational awareness, bed status, patient tracking

Full Radio Interoperability with all NoVA Fire/EMS agencies



- RHCC Critical Functions:
  - Coordinate patient movement with EMS
  - Regional Situational Awareness
  - Logistics and Material support
  - Coordinate with VDH Emergency Comms
  - Coordinate with other NCR Response organizations



19

---

---

---

---

---

---

---

---

---

---

---

---

### Northern Virginia Hospital Alliance Recovery



- Logistic and Material Support
- Resupply
- Monitoring and Coordination
- Patient Tracking
- Coordination with partners:
  - VDH
  - Government
  - NCR
  - HCCs
  - 211




20

---

---

---

---

---

---

---

---

---

---

---

---



NORTHWEST HEALTHCARE Response Network

### Snapshot Report #24

HEALTHCARE EMERGENCY COORDINATION CENTER  
DATE: NOVEMBER 21, 2014  
TIME: 1630

SITUATION UPDATE



ANNALS OF SEISMOLOGY | JULY 20, 2015 ISSUE

## THE REALLY BIG ONE

*An earthquake will destroy a sizable portion of the coastal Northwest. The question is when.*

BY KATHRYN SCHULZ



21

---

---

---

---

---

---

---

---

---

---

---

---




Photo Courtesy of Greg Gilbert/The Seattle Times via AP




Photo Courtesy of Ken Lambert/ The Seattle Times via AP

### Duck Boat Crash

Seattle, WA  
9/24/15

---

---

---

---




---

---


---

---

### Utah Department of Health - Response



- EOC representation
- Situational awareness
- Resource management
- Available beds
- Redundant comms
- Assist with SNS deployment
- Assist with use of MRC or VOADs



23

---

---

---

---

---


---

---

---

### Utah Department of Health- Recovery

- Written Regional Recovery Plan
- Access UDEM and HHS Recovery staff
- Continued revision of Regional HVA
- Identify critical healthcare assets
- Prioritize restoration of utilities
- Assist facilities with mitigation/hardening
- Situational Awareness of event impacts



24

---

---

---

---

---

---

---

---



### Wrap Up and What Comes Next?

- Continuous program planning and budget prioritization
- Deliberate response and recovery operational planning at the coalition level
- Training and exercising coalition functions
- Reviewing, evaluate, revise



---

---

---

---

---

---

---

---

### Question and Answer Logistics

- To ask a question-
  - Type the question into the chat feature on your GoToWebinar console
  - We will collect all questions and ask on your behalf to the presenters



---

---

---

---

---

---

---

---

### Closing Remarks

Shayne Brannman, MS, MA  
Director, ASPR TRACIE



---

---

---

---



---

---

---

---

### Questions and Answers



28

---

---

---

---

---


---

---

---

### For additional support

- Check out the resources linked in the presentation
- Contact your NHPP Field Project Officers
- Contact ASPR TRACIE



[ASPRtracie.hhs.gov](http://ASPRtracie.hhs.gov)    1-844-5-TRACIE    [askasprtracie@hhs.gov](mailto:askasprtracie@hhs.gov)



29

---

---

---

---

---

---

---

---