



Access speaker bios here:

<https://files.asprtracie.hhs.gov/documents/signature-healthcare-brockton-webinar-speaker-bios.pdf>

Access the recording here: <https://attendee.gotowebinar.com/recording/6057251774721336578>

Access the transcript here: <https://files.asprtracie.hhs.gov/documents/signature-healthcare-brockton-webinar-transcript.pdf>

Access the Q&A here: <https://files.asprtracie.hhs.gov/documents/signature-healthcare-brockton-fire-webinar-qa.pdf>

TRACIE

HEALTHCARE EMERGENCY PREPAREDNESS  
INFORMATION GATEWAY

## Lessons Learned from the Signature Healthcare Brockton Hospital Fire



The opinions expressed in this presentation and on the following slides by non-federal government employees are solely those of the presenter and not necessarily those of the U.S. government. The accuracy or reliability of the information provided is the opinion of the individual organization or presenter represented.



**T R A C I E**  
HEALTHCARE EMERGENCY PREPAREDNESS  
INFORMATION GATEWAY

**Rachel Lehman**  
**Acting Program Director, ASPR TRACIE**

# ASPR Key Priorities





# ASPR TRACIE: Three Domains



- Self-service collection of audience-tailored materials
- Subject-specific, SME-reviewed “Topic Collections”
- Unpublished and SME peer-reviewed materials highlighting real-life tools and experiences



[asprtracie.hhs.gov](https://asprtracie.hhs.gov)



- Personalized support and responses to requests for information and technical assistance
- Accessible by toll-free number (1844-5-TRACIE), email ([askasprtracie@hhs.gov](mailto:askasprtracie@hhs.gov)), or web form ([ASPRtracie.hhs.gov](https://asprtracie.hhs.gov))



1-844-5-TRACIE



- Area for password-protected discussion among vetted users in near real-time
- Ability to support chats and the peer-to-peer exchange of user-developed templates, plans, and other materials



[askasprtracie@hhs.gov](mailto:askasprtracie@hhs.gov)



# TRACIE

HEALTHCARE EMERGENCY PREPAREDNESS  
INFORMATION GATEWAY

**John Hick, MD**  
**Moderator**  
**Hennepin Healthcare & ASPR TRACIE**



# Lessons Learned from the Signature Healthcare Brockton Hospital February 2023 Fire & Evacuation



SIGNATURE HEALTHCARE

# Disclaimers & Notes

- This information is presented to the best of our ability and recollection
- This presentation is meant to serve as a template for discussion of the event, not as a full and complete after-action report
- The information contained in these slides is confidential, proprietary, and private. It is intended only for the recipient/audience specified and is not meant to be taken as advice.
- It is strictly forbidden to use, circulate, or share any part of this presentation without prior written consent from Claire Sears, HEM, at Signature Healthcare ([csears@signature-healthcare.org](mailto:csears@signature-healthcare.org)).
- All photos in this presentation are credited to Richard Smith (Paramedic - Bridgewater Fire, Retired) unless otherwise noted. Rich's work can be found at [RSSPhotography.net](http://RSSPhotography.net)



# Agenda

- Introductions
- Video (7 minutes)
- Slide presentation
- Telling our stories
- Panel discussion (20 min)



# Meet Our Presentation Team



Kimberly Walsh, MSN, RN-Sr. Vice President of Patient Services, CNO. Kim joined Brockton Hospital in 1985 as a staff nurse. She has held a number of management positions over the years, taking on the role of Vice President for Nursing in 2004. In her current role, she is responsible for Nursing, Laboratory, Pharmacy and Radiology Services at Signature Healthcare, the Brockton Hospital School of Nursing, and all Clinical Departments at Brockton Hospital.



Melissa DeMayo, MSN, RN, LNC is the Vice President of Quality and Chief Quality Officer at Signature Healthcare. With her evolved experience as a clinical nurse, legal nurse, nurse educator, administrator and now, healthcare executive, Patient Safety, Risk Management, and Healthcare Quality have been the major focus of Melissa's 30-year career.



Claire Berube Sears, HEM, is the Emergency Management and Environmental Safety Program Manager at Signature Healthcare. With a background in hands-on training and education with the American Red Cross, Claire began her work in healthcare in Boston in 2013. At Signature, she is part of the Healthcare Quality team focused on safety and compliance and serves as Liaison Officer during continued engagement with regional, state, and federal partners.



# Video Presentation





# Signature Healthcare Brockton Hospital





February 7, 2023 @07:00

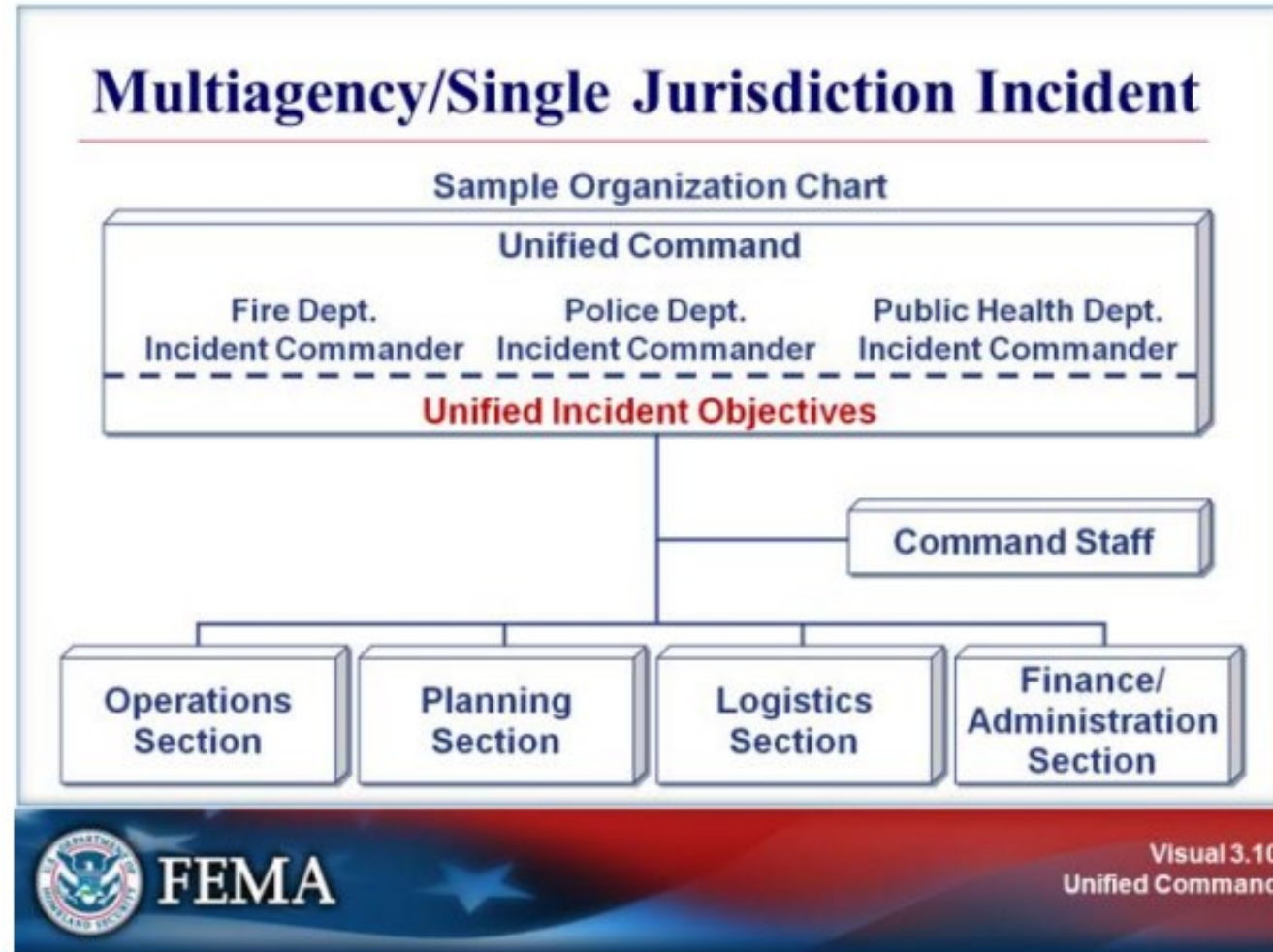








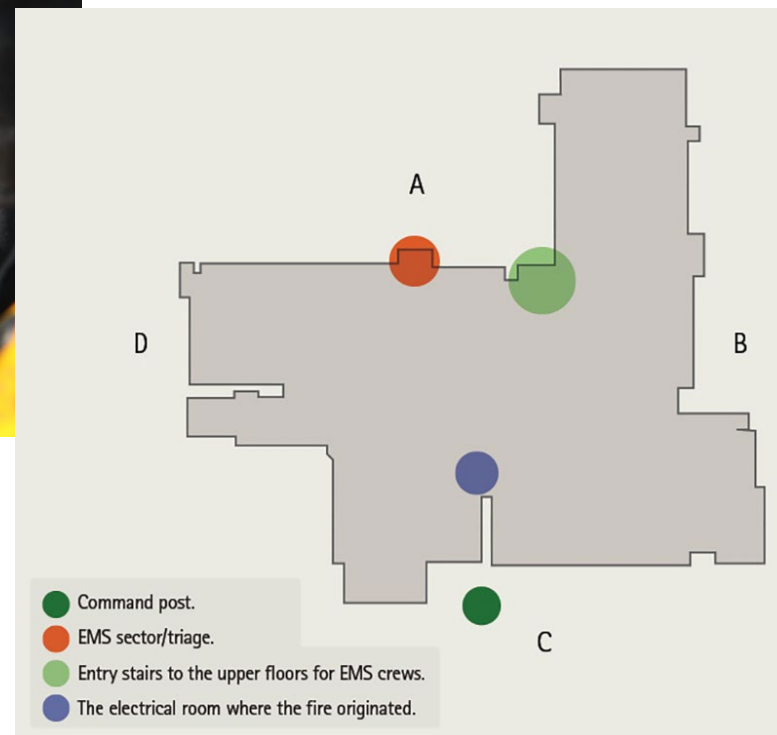
# Integrated FD & Hospital Incident Command – Unified Command



# Firefighting Command Structure

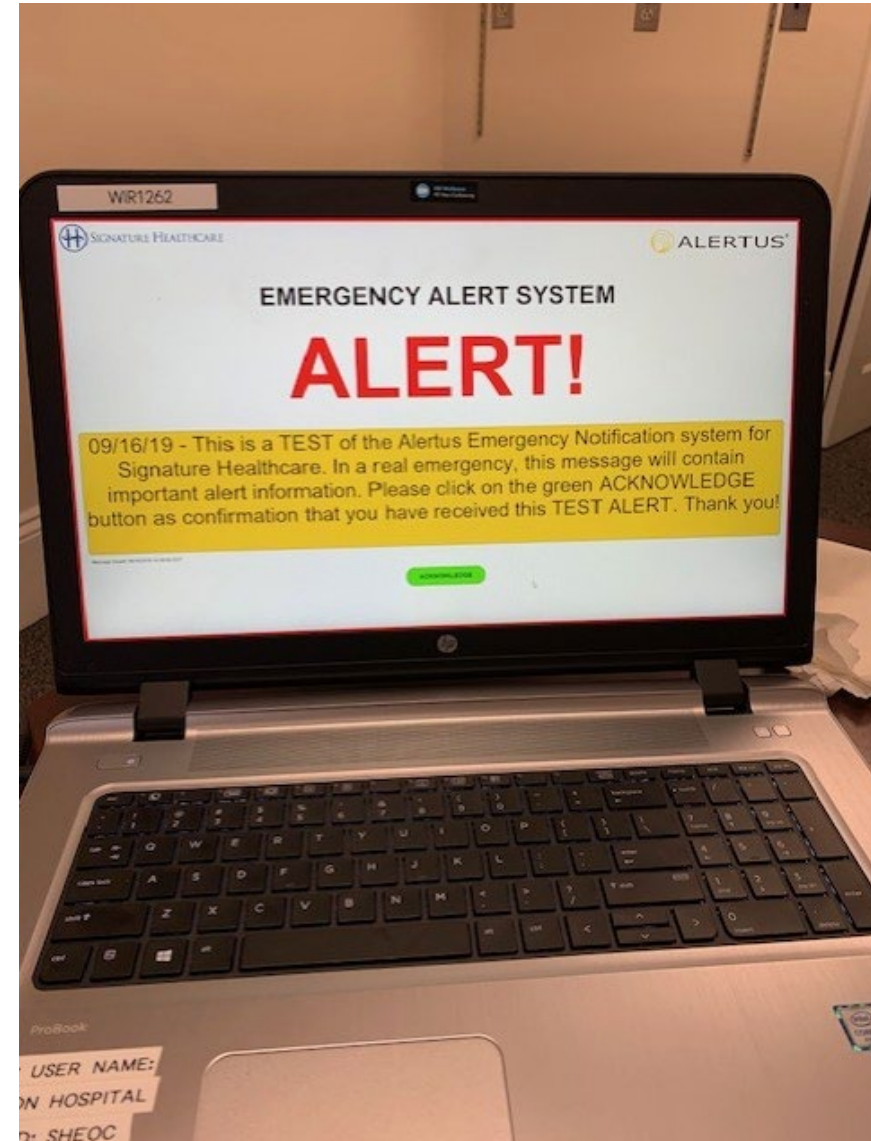


Two operating areas: one behind hospital for firefighting operations and one in front of the hospital for evacuation

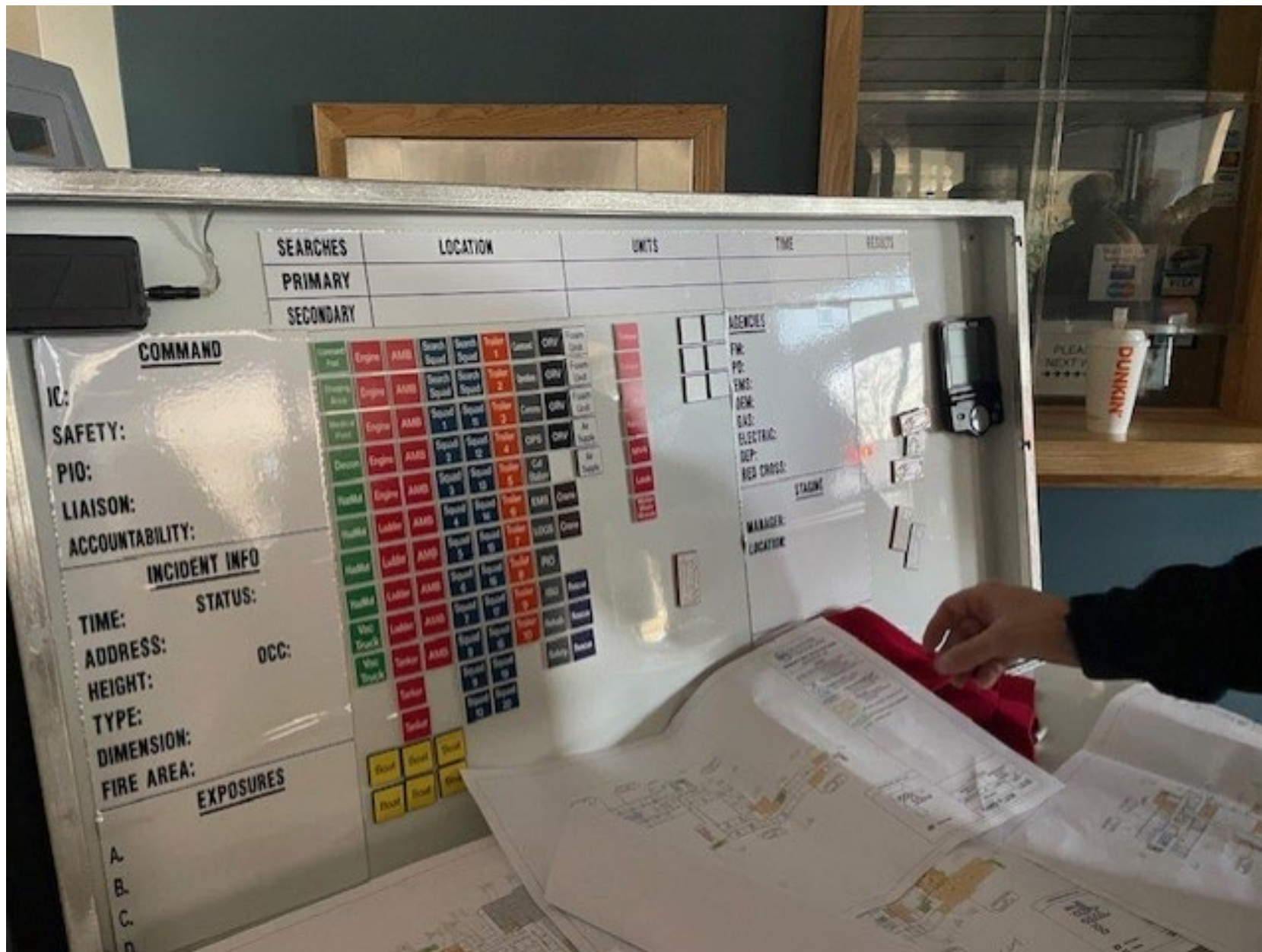


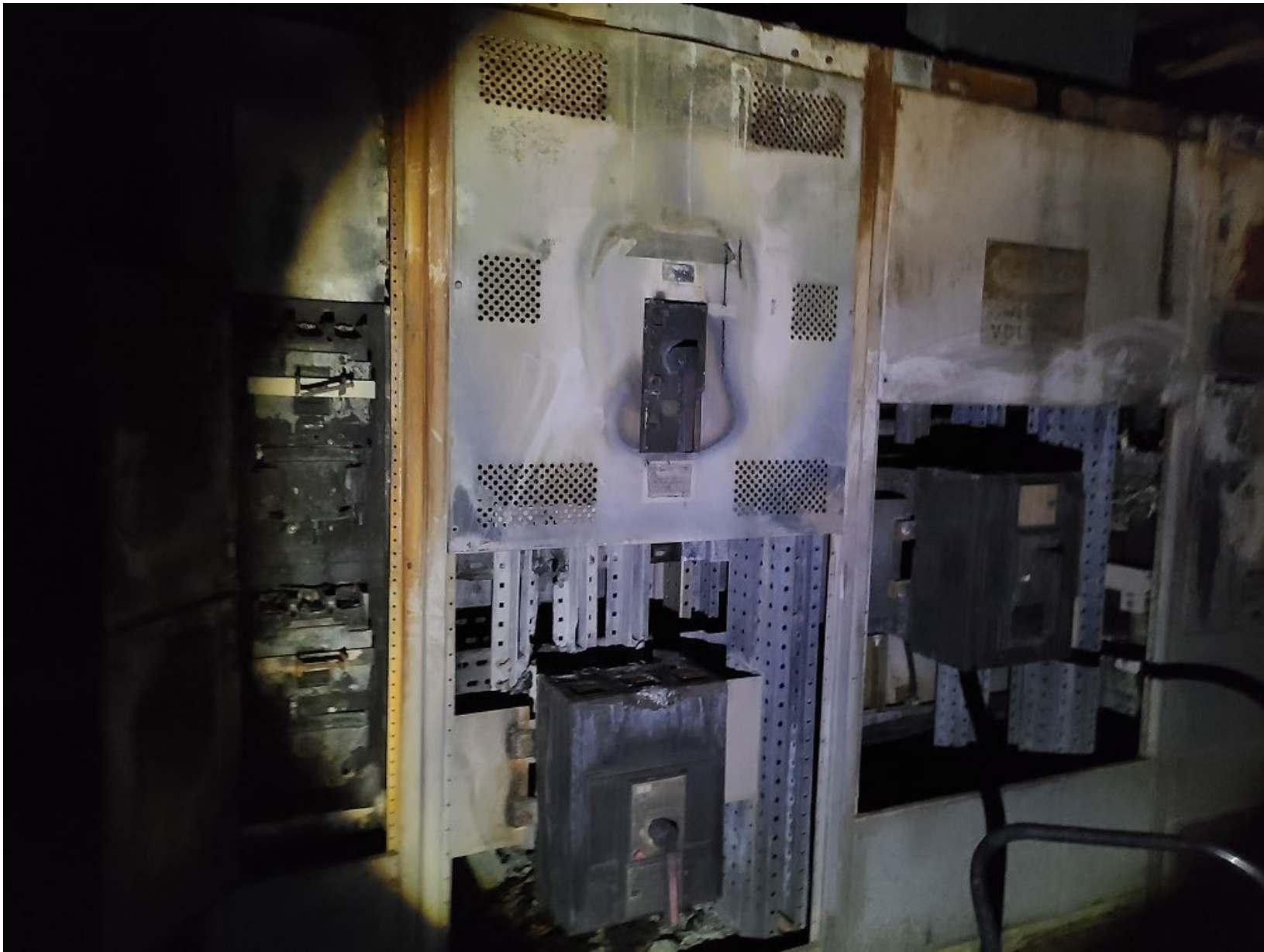


# Resources & Communication









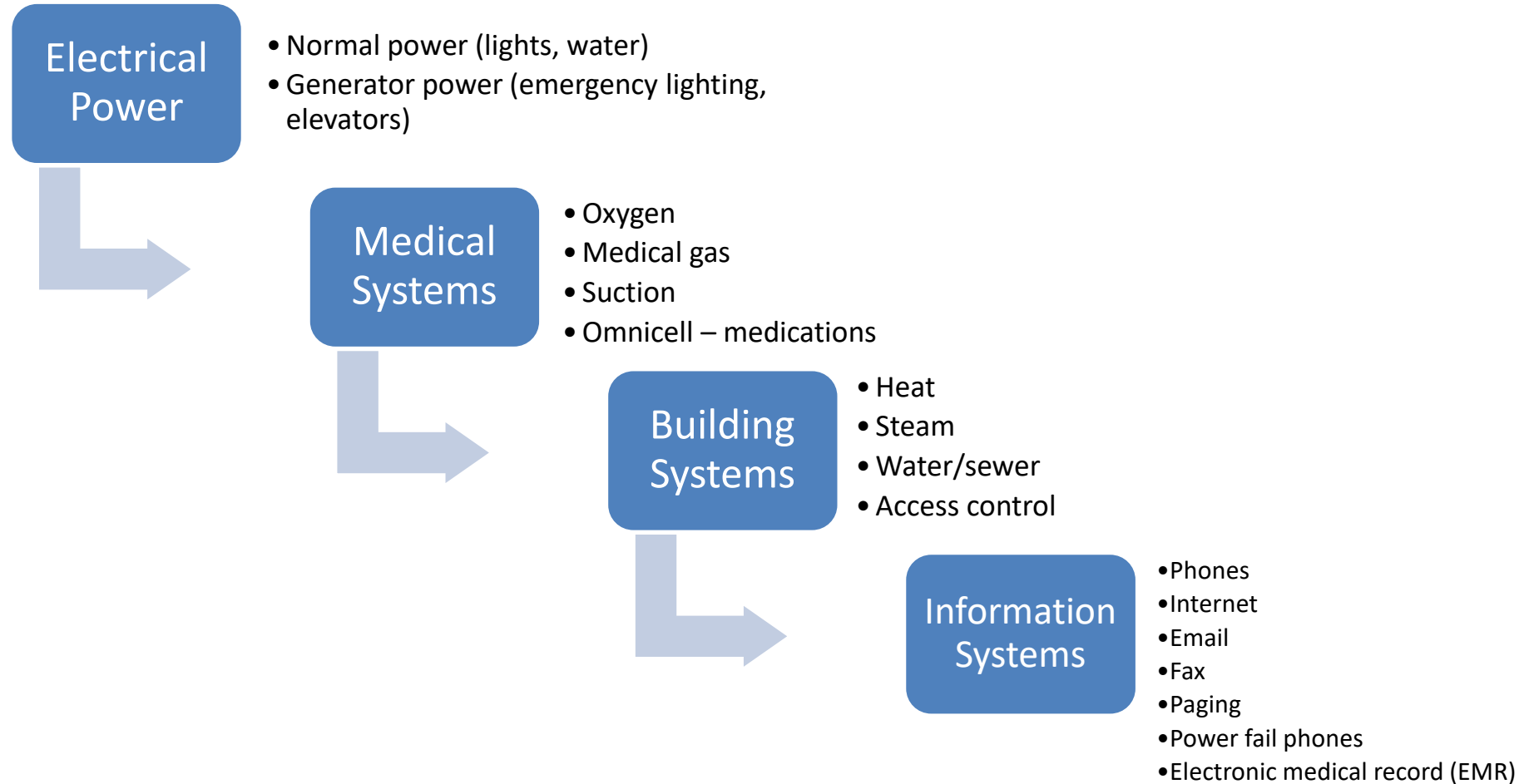




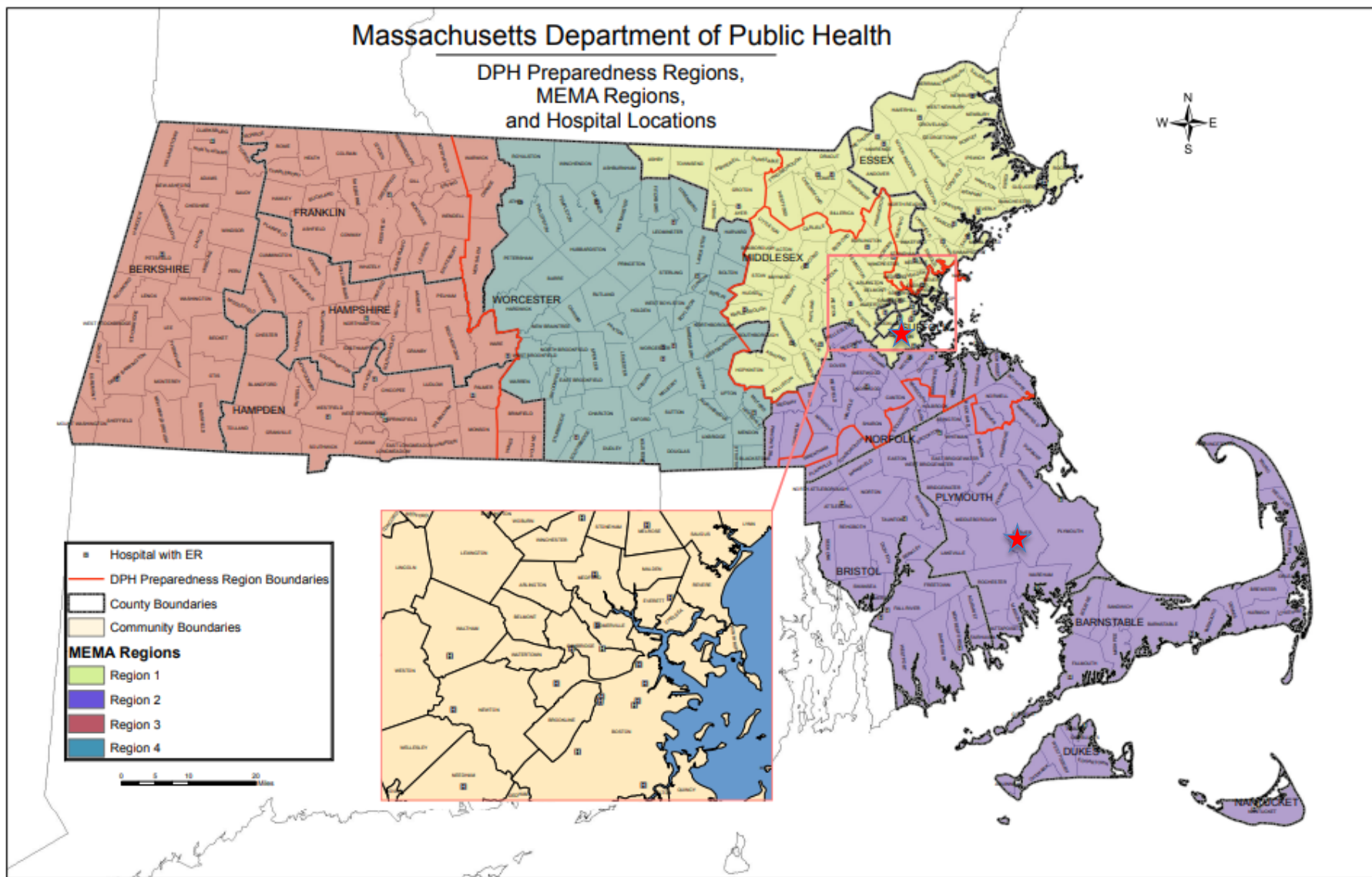




# Cascading Systems Failure









# External Resources - Fire/Rescue



















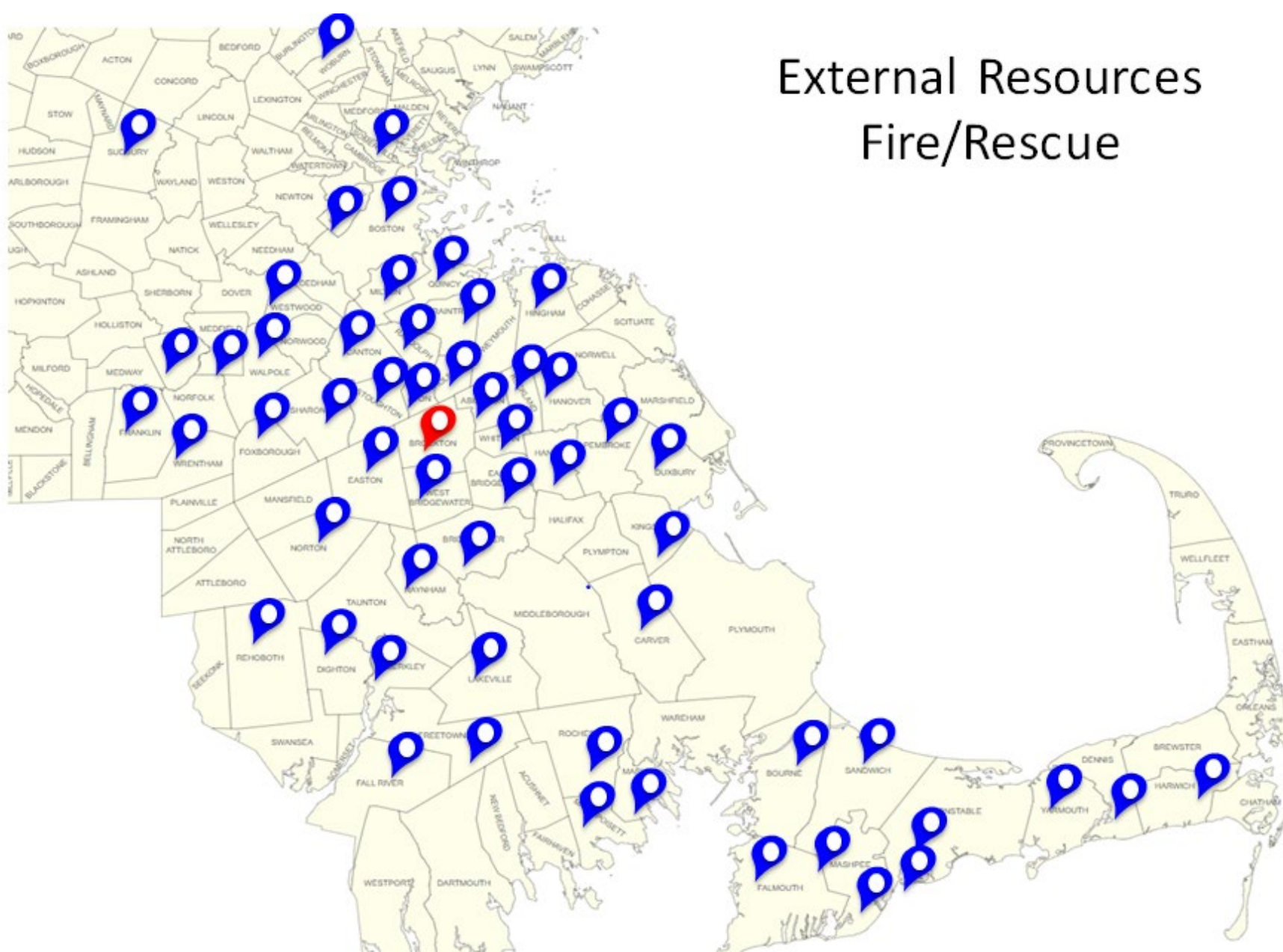
# External Resources - Fire/Rescue

- Abington
- Avon
- Berkeley
- Boston
- Bourne
- Braintree
- Bridgewater
- Brockton
- Brookline
- Carver
- Canton
- Centerville
- Cotuit
- Dennis
- Dighton
- Duxbury
- Easton
- East Bridgewater
- Fall River
- Falmouth
- Foxboro
- Franklin
- Freetown
- Hanover
- Hanson
- Harwich
- Hingham
- Holbrook
- Kingston
- Lakeville
- Marion
- Mashpee
- Mattapoisett
- Medfield
- Millis
- Milton
- Norton
- Osterville
- Pembroke
- Quincy
- Randolph
- Raynham
- Rehoboth
- Rochester
- Rockland
- Sandwich
- Sharon
- Somerville
- Stoughton
- Sudbury
- Tewksbury
- Walpole
- Westwood
- West Bridgewater
- Whitman
- Wrentham
- Yarmouth

56 total



## External Resources Fire/Rescue





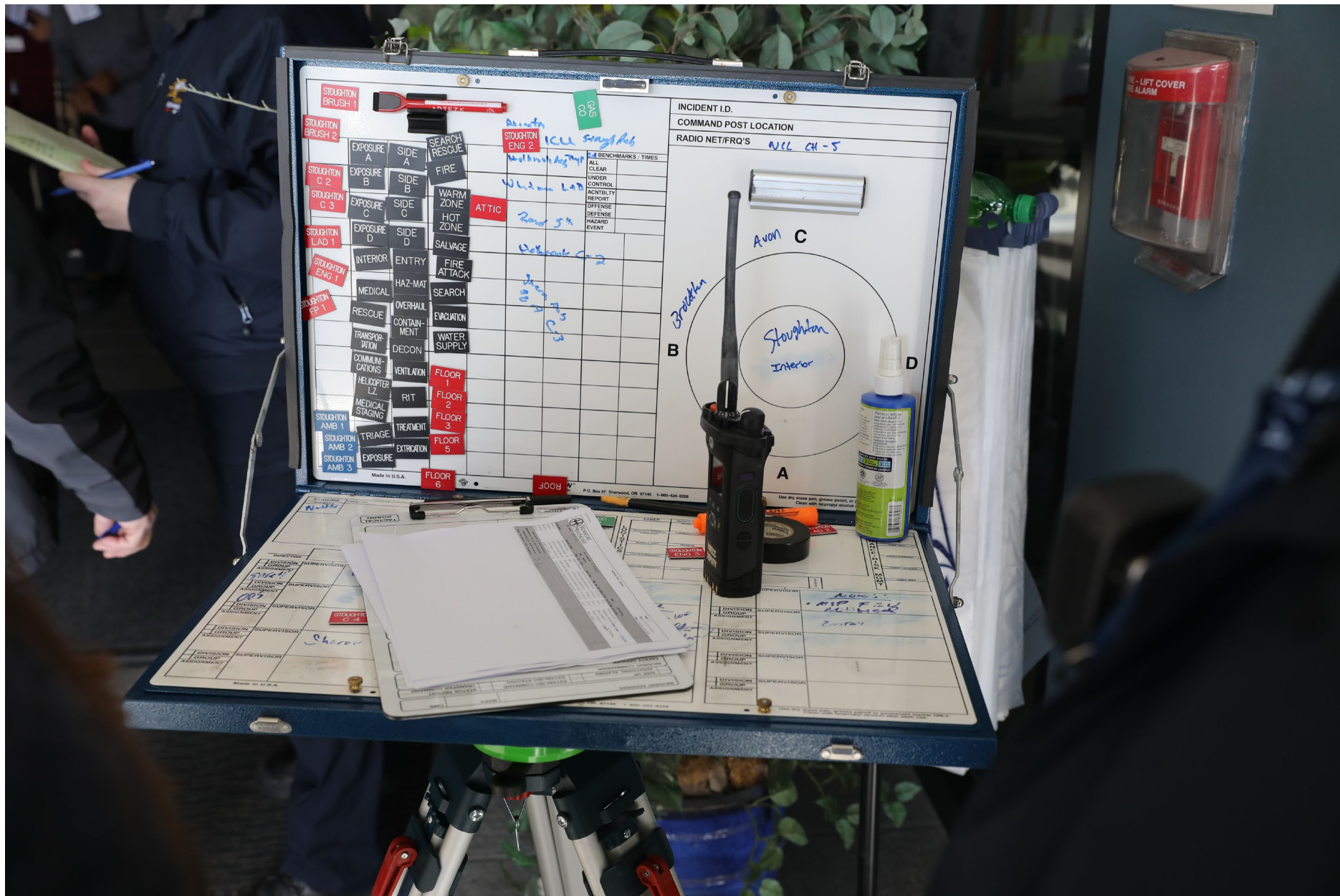
# Evacuation Command Post



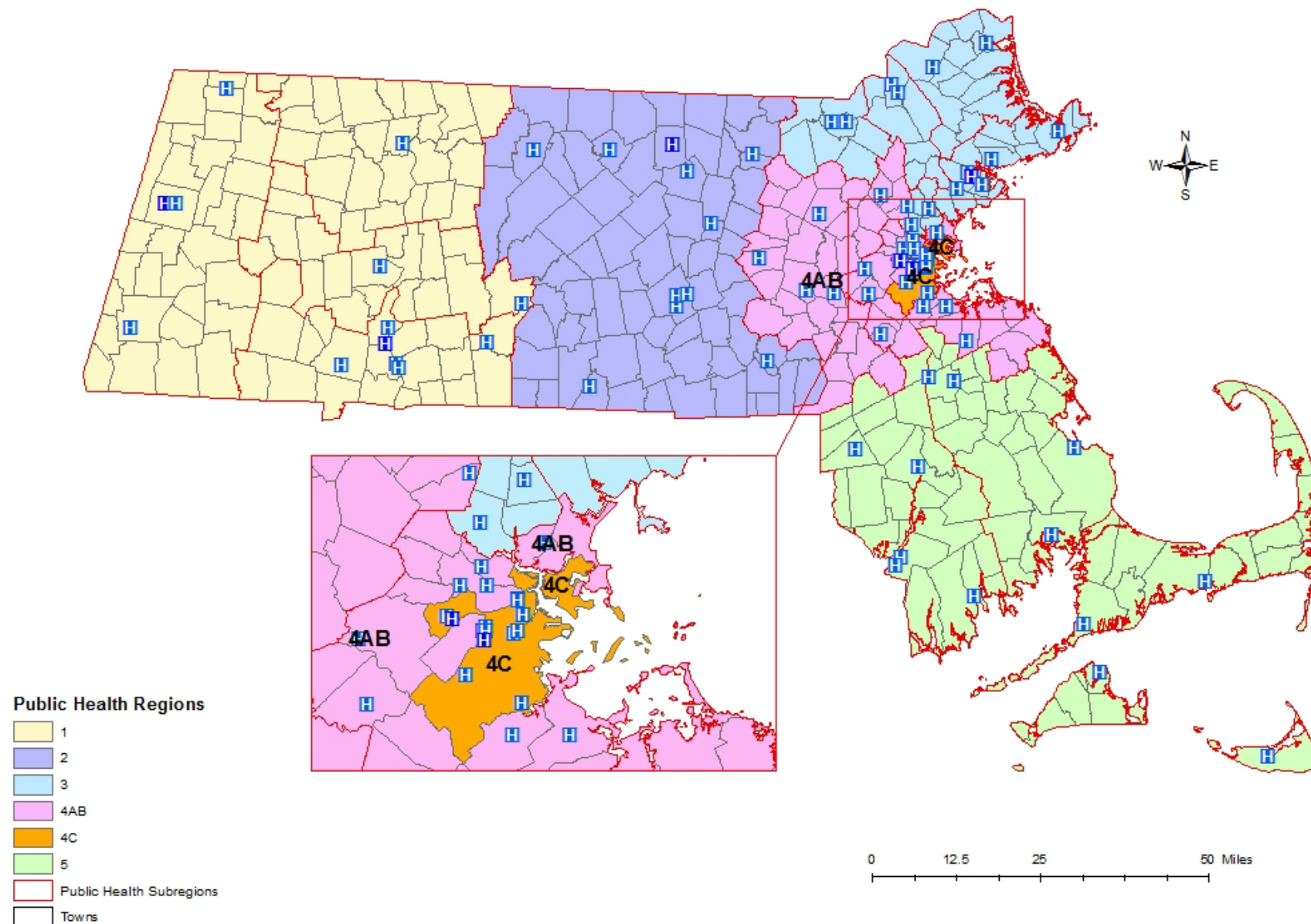








## Massachusetts Hospital Preparedness Regions and Acute Care Facilities





This map illustrates the geographic distribution of hospitals across the Northeast United States, including parts of New England, New York, New Jersey, and Pennsylvania. A red star is placed on the map to indicate the location of Signature Healthcare Brockton Hospital in Brockton, Massachusetts. The map shows a high density of hospitals in the Boston area and along the Atlantic coast, with labels for numerous medical facilities such as Beth Israel, St. Elizabeth's, and Mount Sinai. Major cities and transportation routes are also depicted for context.

This map of Massachusetts displays the distribution of healthcare facilities across the state. Major urban centers and their associated hospital systems are clearly visible. The map uses purple pins to denote a wide range of hospitals, while blue pins highlight specific locations of interest. A red star is positioned in the central-eastern part of the state, near the border with Connecticut, marking a particular facility. The map also shows major highways, geographical features like the Cape Cod Peninsula, and surrounding bodies of water.





# Evacuation Entrance/Exit





# Evacuation Entrance/Exit





# Patient Evacuation













# Patient Tracking





# Firefighting Operations





# HazMat Concerns







# HazMat Concerns



# Media









# Hospital Incident Command



# Recovery



Photo by Paul Connors/Media News Group/Boston Herald)





# Recovery



(Photo by Paul Connors/Media News Group/Boston Herald)



# Recovery



Photo by Paul Connors/Media News Group/Boston Herald)





# Recovery -Staff Impacts



# Thank you!

Please feel free to reach out with any questions you may have.

Contact: [csears@signature-healthcare.org](mailto:csears@signature-healthcare.org)



SIGNATURE HEALTHCARE



# Panel Roundtable

# Question & Answer





# Contact ASPR TRACIE



**asprtracie.hhs.gov**



**1-844-5-TRACIE**



**askasprtracie@hhs.gov**